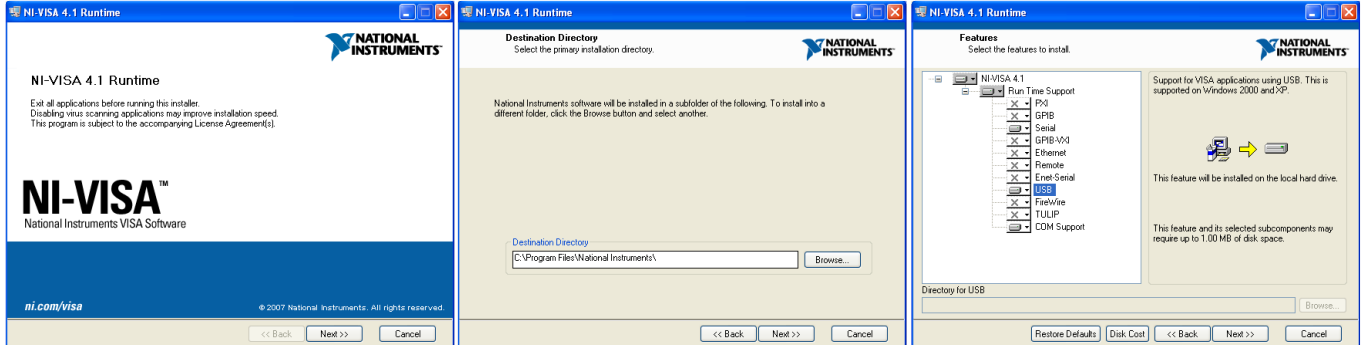


Installation of NI-VISA runtime engine

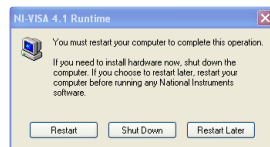
Note : Installation of VISA is only necessary on PC's not containing a VISA library.

On the supplied memory stick, find the folder "VISA"

Double click setup.exe to install this software and follow the directions on the screen.



The above selected components are necessary, other VISA components may be installed but are not needed for the Brontes Colorimeter.

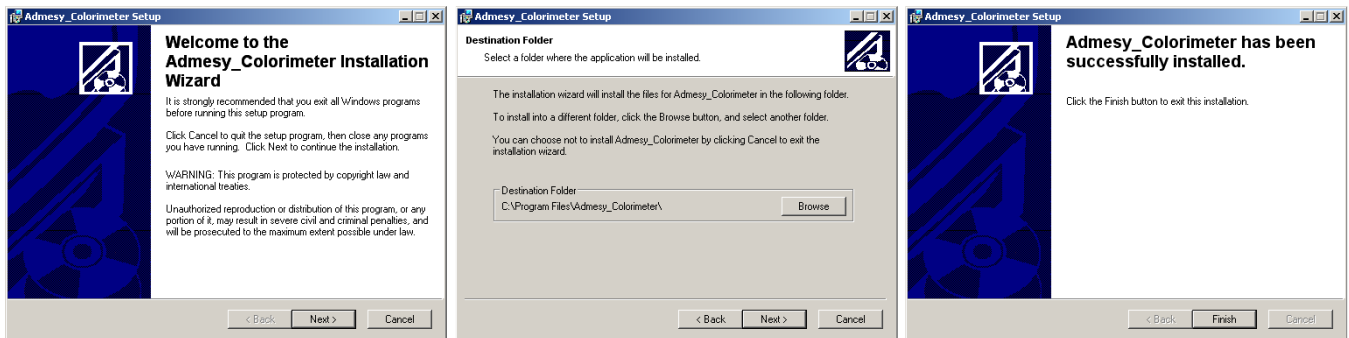


After installation, restart of the PC is necessary otherwise the Colorimeter will not be registered correctly as a USB Test and Measurement device.

Installation of the Colorimeter application software

On the supplied memory stick, find the folder containing the Admesy Colorimeter Application.

Inside this folder a folder named "installer" can be found. Enter this folder and double click setup.exe to install this software and follow the directions on the screen.



Starting measurements using the Admesy Colorimeter

- Connect the Colorimeter
- Windows will find a new device and will assign the USB test and measurement driver to it.
- After successful registration of the driver, start the Admesy Colorimeter application software
- Measurement should start when the application opens.