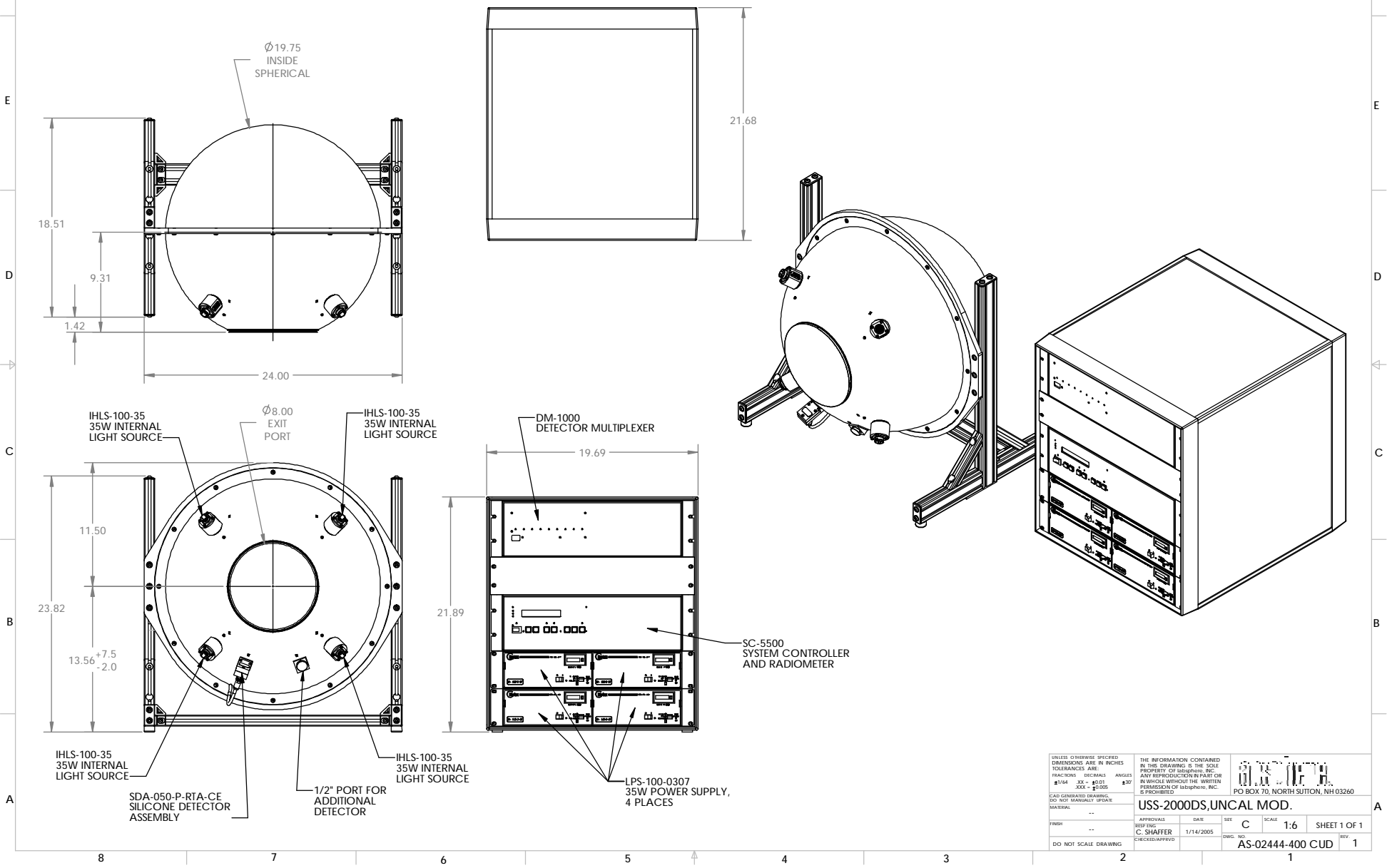


8 7 6 5 4 3 2 1

NOTE:

- 1 - UNLESS OTHERWISE SPECIFIED DIMENSIONS LISTED AS INCHES. DIMENSIONS SUBJECT TO CHANGE WITHOUT NOTICE.
- 2 - 4 CABLES (10 FEET LONG EACH) FROM LIGHT SOURCES TO LPS-100's NOT SHOWN BUT INCLUDED WITH SYSTEM. TRIAX CABLE (15 FEET LONG) FROM SC-5500 TO SDA-050-P-RTA-CE NOT SHOWN BUT INCLUDED WITH SYSTEM.



UNLESS OTHERWISE SPECIFIED DIMENSIONS ARE IN INCHES. TOLERANCES ARE: FRACTIONS DECIMALS ANGLES 1/64 XX ± 0.01 XXX ± 0.005		THE INFORMATION CONTAINED IN THIS DRAWING IS THE SOLE PROPERTY OF IDS/PHYS, INC. ANY REPRODUCTION IN PART OR IN WHOLE WITHOUT THE WRITTEN PERMISSION OF IDS/PHYS, INC. IS PROHIBITED.		PO BOX 70, NORTH SUTTON, NH 03260	
CAD GENERATED DRAWING. DO NOT MANUALLY EDIT.		MATERIAL		USS-2000DS, UNCAL MOD.	
APPROVALS	DATE	SIZE	SCALE	SHEET 1 OF 1	
DESIGNED C. SHAFFER	1/14/2005	C	1:6	REV 1	
CHECKED/APPROVED		DWG. NO.	AS-02444-400 CUD		
DO NOT SCALE DRAWING					